

2024 SPRING SPECIALS

REFRESH YOUR FLEET WITH CAT® CERTIFIED REBUILDS



Check inside for details!



844-CAT-1923 | hopenn.com

H.O.PENN
Since 1923



IS YOUR HYDRAULIC SYSTEM STEALING YOUR PROFITS?

OUR HYDRAULIC SERVICE HELPS YOU BOOST PRODUCTIVITY AND CONTROL COSTS

Productivity loss happens slowly as hydraulic cylinders, pumps and motors wear. Contamination can accelerate wear. Hydraulic leaks can occur. You may experience reduced hydraulic pressure, cylinder drift, poor breakout force or excessive heat. All of these can rob you of power and faster working speeds.

\$995 Hydraulic System Checkup

WE WILL TEST AND ADJUST YOUR HYDRAULIC PRESSURES TO ENSURE PEAK PERFORMANCE

HYDRAULIC DIAGNOSTIC INSPECTION INCLUDES:

- » **System Pressures**
- » **Cycle Times**
- » **Oil Analysis**
- » **Visual Inspection**

FOR A LIMITED TIME:

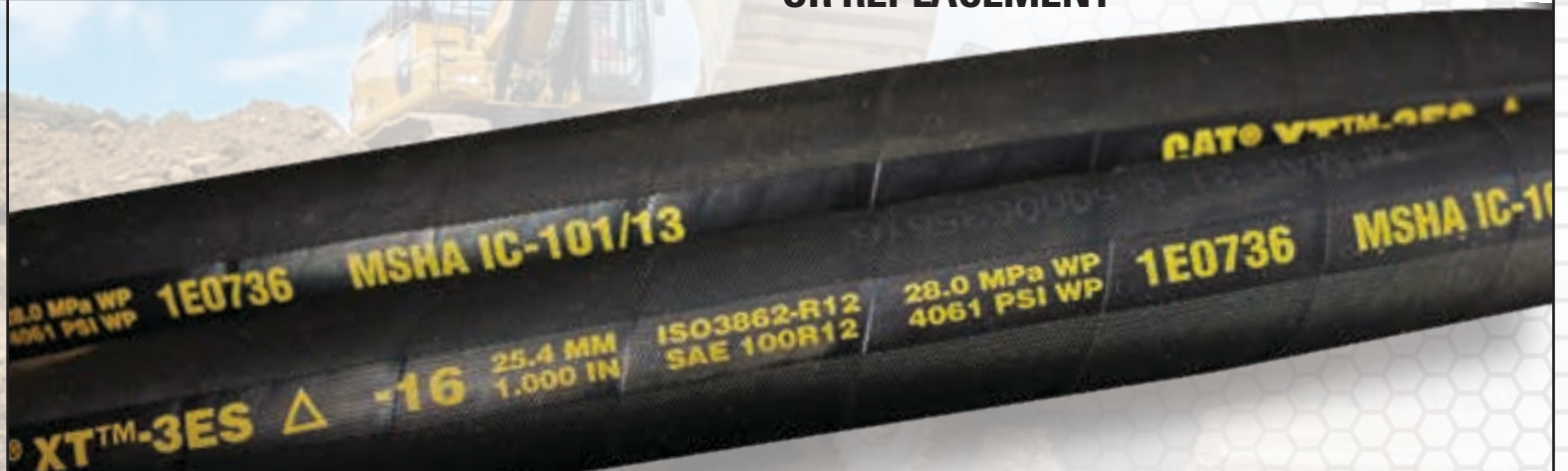
UP TO 10% OFF HYDRAULIC PARTS*

REACH OUT TO YOUR PRODUCT SUPPORT REP TO SAVE EVEN MORE!

**ANY HOSE!
ANY MACHINE!**

RECEIVE
15% OFF

YOUR 2ND HYDRAULIC HOSE REBUILD OR REPLACEMENT



844-CAT-1923 | hopenn.com

Offers valid through June 30, 2024.



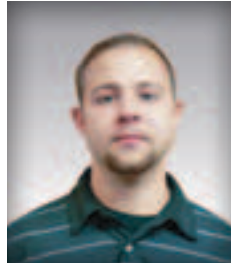
IN PERSON, OVER THE PHONE, OR ONLINE

Molded and forged by H.O. Penn and Caterpillar®, they're trained and focused on helping you maintain and improve your productivity. As a trusted business partner, your PSSR understands your concerns, challenges, and opportunities. They are available to offer the guidance needed to maximize the life of your investment ... **Everyday ... All Day.**



Jonathan Szypot

Cell: 516-282-5835
Nassau County, NY
Product Support
Jszypt@hopenn.com



Kevin Bray

Cell: 860-310-7547
Orange, Rockland,
Sullivan, Ulster, NY
Product Support
Kbray@hopenn.com



Chris Donde

Cell: 917-560-4750
Bronx, New York,
Queens, Brooklyn
Product Support
Cdonde@hopenn.com



Phil Molloy

Cell: 860-883-2983
Middlesex, New Haven,
New London, Windham, CT
Product Support
Pmolloy@hopenn.com



Jesse Reynolds

Office: 845-437-4124
Aftermarket Digital
Solutions Specialist
Jreynolds@hopenn.com



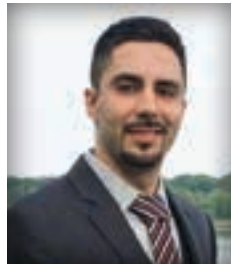
Kevin Kretschmer

Cell: 646-315-2284
New York
Metso Product Specialist
Kkretschmer@hopenn.com



Ed Baklik

Cell: 860-883-5857
Hartford, Tolland,
CT Product Support
Ebaklik@hopenn.com



Rick Rodrigues

Office: 845-437-4125
Senior Condition
Monitoring Analyst
Rodrigues@hopenn.com



Jason DiMase

Cell: 845-220-6481
Litchfield and Fairfield, CT
Product Support
Jdimase@hopenn.com



Mark Goldberg

Cell: 845-235-1697
Connecticut/New York
TEPS Program
Manager/Truck Engine
Product Support
Mgoldberg@hopenn.com



Dave Gillen

Cell: 845-656-0475
Dutchess, Putnam,
and Westchester
Product Support
Dgillen@hopenn.com



Bill Franzone

Cell: 516-790-5722
Suffolk County Earthmoving
Metro NY Truck Engine
Product Support
Bfranzone@hopenn.com



Jeffrey Keenan

Office: 845-437-4129
Condition
Monitoring Analyst
Jkeenan@hopenn.com



Tommy Cipollini

Cell: 845-519-9675
Office: 845-437-4128
New York
Inside Product Support Rep
Tcipollini@hopenn.com



844-CAT-1923 | hopenn.com

WITH AN H.O. PENN PRODUCT SUPPORT SALES REPRESENTATIVE IN YOUR CORNER, IT'S LIKE HAVING A FLEET MANAGEMENT CONSULTANT WORKING FOR YOU, WITH OVER 200 YEARS OF COMBINED INDUSTRY EXPERIENCE.



75 FIELD SERVICE TRUCKS

18 SPECIALIZATION SHOPS

90 SERVICE BAYS

32 MINIMUM HOURS TECHNICAL TRAINING ANNUALLY



CUSTOMER TRAINING SERVICES

- › OPERATOR
- › SAFETY
- › TECHNICIAN

800+

RENTAL FLEET



IN-HOUSE FLUIDS ANALYSIS LAB



WORLD CLASS FACTORY SUPPORT

225+

PARTS & SERVICE EMPLOYEES

PARTS.CAT.COM
PARTSTORE INSTANT ACCESS

42,325

INDIVIDUAL PART NUMBERS STOCKED



H.O.PENN **CAT**
Since 1923

6 LOCATIONS
DAILY PARTS TRANSIT



75+

CERTIFIED REBUILDS ANNUALLY



SERVING OUR CUSTOMERS FOR 4 GENERATIONS



15 HOURS SAFETY TRAINING ANNUALLY PER PERSON



CONDITION MONITORING CENTER

CAT® CONNECT
(GPS REMOTE MONITORING)



\$10 MILLION+
IN PARTS INVENTORY



15 FIELD PRODUCT SUPPORT SALES REPRESENTATIVES



950/966/980
(G/H/K)

**REBUILD
OPTIONS**

Renewing your Cat® 950/966/980G/H/K with the latest technology, performance, safety, and comfort options will make your machine better than brand new.

For a limited time, choose one of the rebuild packages below and get special pricing and upgrade options.

Plus, get a complementary **3 year/5,000 hour** Extended Protection Plan



| SERVICES PERFORMED | CUSTOM REBUILD | CERTIFIED POWERTRAIN | CERTIFIED POWERTRAIN + HYDRAULICS | CERTIFIED MACHINE |
|--|--------------------------|----------------------|-----------------------------------|---------------------|
| Perform Inspection & Clean Machine | <input type="checkbox"/> | ✓ | ✓ | ✓ |
| Remove & Install Powertrain Components | <input type="checkbox"/> | ✓ | ✓ | ✓ |
| Recondition/Replace Engine | <input type="checkbox"/> | ✓ | ✓ | ✓ |
| Replace Hoses & Lines For Engine, Powertrain/Drivetrain, Steering, Fan | <input type="checkbox"/> | ✓ | ✓ | ✓ |
| Complete All Required Engine Updates | <input type="checkbox"/> | ✓ | ✓ | ✓ |
| Recondition/Replace Clean Emissions Module & DPF Filter | <input type="checkbox"/> | ✓ | ✓ | ✓ |
| Recondition Transmission/Torque Converter | <input type="checkbox"/> | ✓ | ✓ | ✓ |
| Replace Transmission Oil Pump & Cooler | <input type="checkbox"/> | ✓ | ✓ | ✓ |
| Recondition Front/Rear Axles & Brakes | <input type="checkbox"/> | ✓ | ✓ | ✓ |
| Recondition Brake Control Valve | <input type="checkbox"/> | ✓ | ✓ | ✓ |
| Recondition Radiator & Cooling Package | <input type="checkbox"/> | ✓ | ✓ | ✓ |
| Recondition Hydraulic Fan Motor & Pump | <input type="checkbox"/> | ✓ | ✓ | ✓ |
| Replace Powertrain Electrical Components | <input type="checkbox"/> | ✓ | ✓ | ✓ |
| Recondition Drive Shafts & Replace Spider Joints As Needed | <input type="checkbox"/> | ✓ | ✓ | ✓ |
| Complete All Required Powertrain Updates | <input type="checkbox"/> | ✓ | ✓ | ✓ |
| Remove & Install Hydraulic Components | <input type="checkbox"/> | | ✓ | ✓ |
| Replace All Hydraulic Hoses & Lines | <input type="checkbox"/> | | ✓ | ✓ |
| Replace Hydraulic Accumulators | <input type="checkbox"/> | | ✓ | ✓ |
| Recondition Hydraulic Control Valve | <input type="checkbox"/> | | ✓ | ✓ |
| Recondition Steering Valve | <input type="checkbox"/> | | ✓ | ✓ |
| Replace Hydraulic Pumps (Implement, Steering, Brake) | <input type="checkbox"/> | | ✓ | ✓ |
| Recondition All Cylinders (Lift, Tilt, Steering) | <input type="checkbox"/> | | ✓ | ✓ |
| Perform Full Service On Machine | <input type="checkbox"/> | | ✓ | ✓ |
| Replace Hydraulic Electrical Components | <input type="checkbox"/> | | ✓ | ✓ |
| Complete All Required Hydraulic Updates | <input type="checkbox"/> | | ✓ | ✓ |
| Inspect & Repair Frame/Chassis As Required | <input type="checkbox"/> | | | ✓ |
| Recondition Cab | <input type="checkbox"/> | | | ✓ |
| Recondition HVAC System | <input type="checkbox"/> | | | ✓ |
| Repin/Rebearing Articulation Hitch (*Line Boring Not Included) | <input type="checkbox"/> | | | ✓ |
| Paint Machine | <input type="checkbox"/> | | | ✓ |
| Replace Decals | <input type="checkbox"/> | | | ✓ |
| Complete All Required Engineering Updates | <input type="checkbox"/> | | | ✓ |
| Install Product Link - (*Based On Machine) | <input type="checkbox"/> | 3 Years | 3 Years | 3 Years |
| Preventative Maintenance (CVA) | <input type="checkbox"/> | 1,000 HR Parts Only | 1,000 HR Plus Labor | 2,000 HR Plus Labor |
| Complete Performance Testing, Adjust Pressures & Update Software | <input type="checkbox"/> | ✓ | ✓ | ✓ |
| Field Follow-Up At Or After 50 Hours | <input type="checkbox"/> | ✓ | ✓ | ✓ |



SCAN TO VIEW
MORE REBUILD OPTIONS



Contact Your Product Support Sales Rep at 844-CAT-1923

SCAN TO VIEW
CUSTOMER TESTIMONIAL





CAT® CARD

Cat® Financial Commercial Account – One Card for All Cat Dealers

The Cat Financial Commercial Account is a revolving charge account that enables customers to pay for parts, service, and rentals at any Cat Dealer in the United States using one universal account.

Whether you're a national rental customer or an owner-operator, you will enjoy the convenience of one statement and one account, no matter which Cat Dealer you do business with.



- » 6 months no payments, 0% interest
- » 0% for 12 months with 3 months upfront skips + 9 months equal payments
- » 12 equal monthly payments @ 0% interest
- » 18 equal monthly payments @ 1.9% interest
- » 24 equal monthly payments @ 3.9% interest
- » Work Tools – 0% for 12 months
- » Work Tools – 1.9% for 24 months



For more information, scan the code.

Program NAT-MLP-4548/NAT-NEC-3236. Offer ends June 30, 2024. Restrictions apply. Subject to change based on market conditions.

2024 COMPACTION NATIONAL PROGRAM

2024 Utility Compactor, Soil Compactor, Tandem Vibratory Compactor, and Pneumatic Compactor National Offer!



CONVENIENCE

CUSTOMER VALUE AGREEMENT



- 1 Year or more Cat Genuine Parts (PLANNED MAINTENANCE PARTS KITS)
- Cat Fluid Analysis (S.O.SSM) or Annual TA1 Inspection
- Connectivity: Monitor your assets remotely and save even more with 12 months of VisionLink® Connect



VALUE BUNDLE CREDIT UP TO \$1500*

Get \$ to Value Bundle when CVA is included at POS. Funds can be used for Finance, EPP or CVA support. The machine sale must include CVA at POS. CB1.7 and CB1.8 are \$750*



*Restriction on CVA 1.7 & 1.8 of \$750

20% OFF 2ND SET G.E.T.

ALL GROUND ENGAGING TOOLS ON-PRODUCT SPECIFIC

Excludes base edges and assemblies.
Includes cutting edges, adaptors, pins, tips,
and retainers. **20% OFF 2nd Set G.E.T.**

Contact your Product Support Sales Rep
today and learn more about our various
parts and service specials.

Offer valid through June 30, 2024. Financing and published
rates are subject to credit approval. Contact your local
Product Support Sales Rep for more information.

SAVE NOW, GO FAR: CAT® ON-HIGHWAY TRUCK ENGINES

Visit cat.com/gothedistance for complete offer details.



**WATER PUMP
GUARANTEED CORE
CREDIT FOR EQUIVALENT
AFTERMARKET CORE**

OFFER RUNS THROUGH JUNE 30, 2024

\$500 OFF
CAT REMAN TURBOS

OFFER RUNS THROUGH JUNE 30, 2024

\$1500 OFF
CAT REMAN
HEAVY DUTY
ENGINES

OFFER RUNS THROUGH JUNE 30, 2024

\$1000 OFF
CAT REMAN LONG
BLOCKS

OFFER RUNS THROUGH JUNE 30, 2024

*NAT-ENG-3275

\$500 OFF
CAT REMAN HD
PRECIOUS METALS KITS

OFFER RUNS THROUGH JUNE 30, 2024

UP TO \$1000 OFF
IN SHOP REBUILD
SPECIAL PROGRAM

OFFER RUNS THROUGH JUNE 30, 2024

CONTACT YOUR TRUCK SERVICE REP FOR DETAILS

LONG ISLAND

Mike Zwirz: 631-654-4419

BRONX

Gary Landi: 718-409-8533

POUGHKEEPSIE

Kevin Flanigan: 845-437-4081

BLOOMINGBURG

William Marsh: 845-733-6417

CONNECTICUT

Dan Bezdelovs: 860-594-4842

CAT® CUSTOMER VALUE AGREEMENTS



Whether you're building our communities or mining materials that keep our world working – a CVA helps you get the most from your construction equipment and your business.

RECEIVE
25%*
OFF
YOUR EXISTING
CVA RENEWAL

WHAT'S A CVA?

YOUR CUSTOMER VALUE AGREEMENT.

Cat® Customer Value Agreements (CVAs) are easy ownership plans fit to your business needs in order to extend equipment life and maximize your investment. Whatever your industry, whatever your Cat product – keeping it in excellent condition means more production and lower costs. That's a CVA.

What Comes in a CVA?

Each CVA offers different elements depending on the industry and Cat product. View the above pages to learn specific CVA details. But for any CVA, you can expect these four areas of ownership value.

HASSLE-FREE OWNERSHIP

CVAs bring together dealer advice, easy parts acquisition, plus options for flexible payment terms.

*25% discount applies to CVA parts and fluids only.

HASSLE-FREE MAINTENANCE

Getting the right Genuine Cat Parts delivered to the right place at the right time makes it easier for maintenance to get done. Service options are flexible to meet your needs.

SECURITY OF EXPERT DEALER SUPPORT

Cat CVAs are customized plans that offer troubleshooting, diagnostics and repairs with Genuine Cat Parts. If you need trained technician assistance, there are options for that too!

PEACE OF MIND FROM EQUIPMENT HEALTH MANAGEMENT

You get easy access to monitoring tools with a Cat CVA. Digital tools give you the ability to access important operating parameters for your business anywhere you have an internet connection.

CAT® SELF-SERVICE OPTIONS

FLEXIBLE & CONVENIENT REPAIR KITS WITH EVERYTHING YOU NEED TO DO THE WORK YOURSELF

PM KITS, ENGINE KITS,
HYDRAULIC CYLINDER KITS,
ENGINE REBUILD KITS,
BRAKE KITS,
FUEL INJECTION



GENUINE CAT PARTS

backed by our standard Cat® warranty



SERVICE INSTRUCTIONS

including safety and cleanliness guidelines



RECOMMENDED TOOLING

with option to purchase



TECHNICAL SUPPORT

from dealer experts



Visit [Cat.com/SelfService](https://www.cat.com/SelfService) or ask us about Cat Self-Service Options for your equipment

CERTIFIED REBUILDS



336

**REBUILD
OPTIONS**

Renewing your Cat® 336 with the latest technology, performance, safety, and comfort options will make your machine better than brand new.

For a limited time, choose one of the rebuild packages below and get special pricing and upgrade options.

Plus, get a complimentary **3 year/5,000 hour** Extended Protection Plan



| SERVICES PERFORMED | CUSTOM REBUILD | CERTIFIED POWERTRAIN | CERTIFIED POWERTRAIN + HYDRAULICS | CERTIFIED MACHINE |
|--|--------------------------|----------------------|-----------------------------------|---------------------|
| Perform Inspection and Clean Machine | <input type="checkbox"/> | ✓ | ✓ | ✓ |
| Recondition/Replace Engine | <input type="checkbox"/> | ✓ | ✓ | ✓ |
| Complete All Engine Updates | <input type="checkbox"/> | ✓ | ✓ | ✓ |
| Recondition Radiator & Oil Cooler | <input type="checkbox"/> | ✓ | ✓ | ✓ |
| Recondition/Replace Hydraulic Fan Motor & Pump | <input type="checkbox"/> | ✓ | ✓ | ✓ |
| Replace Powertrain Electrical Components | <input type="checkbox"/> | ✓ | ✓ | ✓ |
| Replace Hoses & Lines For Engine, Powertrain/Drivetrain, Steering, Fan | <input type="checkbox"/> | ✓ | ✓ | ✓ |
| Recondition/Replace Emissions/Exhaust | <input type="checkbox"/> | ✓ | ✓ | ✓ |
| Recondition/Replace Final Drives, Travel Motors & Brakes | <input type="checkbox"/> | ✓ | ✓ | ✓ |
| Complete All Required Powertrain Updates | <input type="checkbox"/> | ✓ | ✓ | ✓ |
| Remove & Inspect Hydraulic Components | <input type="checkbox"/> | | ✓ | ✓ |
| Recondition/Replace Swivel/Swing/Drive Motors | <input type="checkbox"/> | | ✓ | ✓ |
| Replace All Hydraulic Hoses & Lines | <input type="checkbox"/> | | ✓ | ✓ |
| Recondition/Replace Hydraulic Pumps | <input type="checkbox"/> | | ✓ | ✓ |
| Recondition Hydraulic Tank | <input type="checkbox"/> | | ✓ | ✓ |
| Recondition/Replace All Hydraulic Valves | <input type="checkbox"/> | | ✓ | ✓ |
| Recondition Hydraulic Cylinders (Boom/Stick/Bucket/Coupler/Cab) | <input type="checkbox"/> | | ✓ | ✓ |
| Recondition/Replace Hydraulic Accumulators/Pump Coupling | <input type="checkbox"/> | | ✓ | ✓ |
| Replace Hydraulic Electrical Components | <input type="checkbox"/> | | ✓ | ✓ |
| Complete All Required Hydraulic Updates | <input type="checkbox"/> | | ✓ | ✓ |
| Inspect Lower Frame for CCR | <input type="checkbox"/> | | | ✓ |
| Recondition Cab | <input type="checkbox"/> | | | ✓ |
| Recondition HVAC System | <input type="checkbox"/> | | | ✓ |
| Undercarriage | <input type="checkbox"/> | | | ✓ |
| Paint Machine | <input type="checkbox"/> | | | ✓ |
| Replace Decals | <input type="checkbox"/> | | | ✓ |
| Install Product Link (*Based on Machine) | <input type="checkbox"/> | 3 Years | 3 Years | 3 Years |
| Preventative Maintenance (CVA) | <input type="checkbox"/> | 1,000 HR Parts Only | 1,000 HR Plus Labor | 2,000 HR Plus Labor |
| Complete Performance Testing, Adjust Pressures & Update Software | <input type="checkbox"/> | ✓ | ✓ | ✓ |
| Field Follow-Up At Or After 50 Hours | <input type="checkbox"/> | ✓ | ✓ | ✓ |



SCAN TO VIEW
MORE REBUILD OPTIONS



Contact Your Product Support Sales Rep at 844-CAT-1923

SCAN TO VIEW
CUSTOMER TESTIMONIAL



Offer ends June 30, 2024.

CAT® 336 REBUILD OPTIONS

UP TO **20% OFF**
CAT® LINKAGE PINS & BEARINGS

PERFECT FIT. PRECISE PRODUCTIVITY.

Don't let your excavator's smallest parts be your weakest link. Cat® linkage pin kits contain everything you need for a quick, quality repair ensuring a perfect fit, precise productivity and higher uptime.

CONVENIENT KIT
CONTAINS PIN, BEARINGS, SEALS & HARDWARE

PRECISION-MATCHED
PIN & BEARING KEEP PRODUCTIVITY HIGH

PROACTIVE REPLACEMENT
SAVES UP TO 85% VERSUS UNPLANNED REPAIRS

CAT® LINKAGE PINS & BEARINGS



DON'T LET YOUR PINS BE YOUR WEAKEST LINK

It's no secret that the longer parts last, the stronger your bottom line. Cat® linkage pins and bearings are designed to meet the toughest standards to ensure more time between replacements. Longer life = lower operating costs.

UP TO **20% OFF**
CAT® LINKAGE PINS & BEARINGS

UP TO **85%** LESS THAN THE COST OF UNPLANNED REPAIRS

UP TO **9x** THICKER CHROME*

UP TO **3x** GREATER HEAT TREAT HARDENED DEPTH*

* Tested against competitive pins

Offers valid through June 30, 2024. Offers may change without prior notice and additional terms and conditions may apply. Contact your local Parts and Service Sales Representative for details.





Want to lower your payments and improve cash flow? Don't miss this special offer available on new machine purchases for the following excavator models: 313-352 and wheeled excavators.

Owning one of these reliable, productive machines is more affordable than ever. Choose between a rate of 0% for 36 months, 1.84% for 48 months or 2.96% for 60 months* and get the perfect machine for any job in any situation. And, they're packed with fuel-saving features to raise your money-making potential even further. **Take advantage of this low rate on qualifying Cat excavators today.**



844-CAT-1923
hopenn.com

*Offer valid from April 1, 2024 through June 30, 2024 on new 313-352 Cat® excavators and wheeled excavators sold by participating Cat dealers to customers in the USA. Purchase must occur during offer period. Offer subject to machine availability and credit approval by Cat Financial. Not all customers will qualify. Offer may change without prior notice and cannot be combined with any other offers. Additional terms and conditions may apply. Contact your Cat dealer for details.

© 2024 Caterpillar. All Rights Reserved. CAT, CATERPILLAR, LET'S DO THE WORK, their respective logos, "Caterpillar Corporate Yellow", the "Power Edge" and Cat "Modern Hex" trade dress as well as corporate and product identity used herein, are trademarks of Caterpillar and may not be used without permission. www.cat.com / www.caterpillar.com

H.O. PENN RENTALS



SIMPLE WAYS TO RENT.

H.O. Penn customers can request rental equipment via:

- » **Phone** – Call our rental staff today to get pricing and availability for your immediate needs.
- » **Mobile App** – Browse our rental catalog or request a quote anywhere, anytime from your phone or mobile device.
- » **Web** – Search equipment specs or request a quote at hopenn.com.

Your time is valuable. H.O. Penn gives you the options to get the equipment you need, when you need it.

YOU NEED IT. WE HAVE IT.

With a rental fleet of over 800 machines on hand, backed by over 150 technicians, it is easy to see the investment H.O. Penn has made to support our customers. Whether you just need more equipment to complete a project or your machine is down, H.O. Penn is ready, willing, and able to provide a solution.

With the largest rental fleet in our area, H.O. Penn is well prepared with low-hour, high-quality equipment.

1-888-RENT-CAT



BANK ON THE TANK

FULL-EFFICIENT CAT® MACHINES PAY YOU BACK

Cash in even more during the Great Payback Event with \$3.65/gallon account credit on your new machine purchase.

Or choose **4.99%** financing for 48 months. Both options come with a Customer Value Agreement (CVA) to ensure your new machine is easy to own and ready to work.

Go to [Cat.com/GreatPayback](https://www.cat.com/GreatPayback) for all the details and a complete list of eligible models.

Offer valid from January 1, 2024 through June 30, 2024 on select new Cat® machines sold by participating Cat dealers to customers in the USA. Purchase must occur during offer period. Offer subject to machine availability and credit approval by Cat Financial. Not all customers will qualify. The offered Cat Customer Value Agreement (CVA) includes 6 maintenance parts kits; S-O-S™; and 36 month VisionLink® Daily. The maintenance parts cover the first 3,000 hours (estimated 3 years) of machine utilization. The kit contains one set of parts for regular planned maintenance under normal operating conditions. In some severe applications where maintenance parts need to be replaced more frequently, additional parts will be at customer's expense. Offer excludes additional maintenance parts, dealer labor, wear parts and fluids. Offer also includes a 36 month/5,000-hour (whichever occurs first) Powertrain, Hydraulics and Technology Equipment Protection Plan (EPP). In some areas, EPP might be sold separately from the CVA. Offer may change without prior notice and cannot be combined with any other offers. Additional terms and conditions may apply. Contact your Cat dealer for details.

© 2024 Caterpillar. All Rights Reserved. CAT, CATERPILLAR, LET'S DO THE WORK, VISIONLINK, their respective logos, "Caterpillar Corporate Yellow," the "Power Edge" and Cat "Modern Hex" trade dress as well as corporate and product identity used herein, are trademarks of Caterpillar and may not be used without permission.



Available Q2 2024

Cat® Skid Steer and Compact Track Loaders

POWER. PERFORMANCE. COMFORT.

Customer Driven Power, Performance, and Operator Comfort Enhancements



MEET THE NEW NEXT GENERATION COMPACT LOADER – 255 is replacing 259D3 and 265 is replacing 279D3 and 289D3

POWER

+15%

255 has more torque than 259D3 with Cat C2.8T engine

+42%

265 has more torque than 289D3 with Cat C2.8TA engine

PERFORMANCE

- More Lift Height*
 - 124"/3.15m = 255 (+2.5"/65mm)
 - 132"/3.30m = 265 (+7.5"/190mm)
- More Tilt Breakout Forces (+14% and +10%)*
- New 255 HF XPS configuration
- Reengineered U/C for improved grading, ride, and stability
- Smart Dozer Blade in Standard Flow Mode
- HF on Demand all models

COMFORT

- New Cab Layout with increased Cab Space
- Next Gen Monitor and Display package
- New Advanced Joysticks to Operate Complex Attachments and Display Operation without removing hands
- Improved entry and exit
- Improved all around visibility

*Improvements measured by 255 vs. 259D3 | 265 vs. 289D3

INTRODUCING NEXT GENERATION BATTERY ELECTRIC MINI EXCAVATOR

DESIGNED FOR ENHANCED PERFORMANCE,
EFFICIENCY, AND INCREASED
SUSTAINABILITY.

- Similar to Diesel Performance
- 32 kWh Battery | 48 Volt
- Zero Exhaust Emissions
- Flexible Charging Options
- Economical and customized battery and charger options
- Helps customers meet sustainability goals

Reach out to your local H.O. Penn dealer for more information.



A CAT MINI-EXCAVATOR DESIGNED AND BUILT WITH TRUE DIFFERENTIATION AND PERFORMANCE.



GENUINE CAT PARTS

The largest selection of genuine Cat parts backed by our 12 month warranty.



GET IT WHEN YOU NEED IT

Free in-store pick up and delivery options available to get you back on the job fast.



24/7 EXPERT SUPPORT

Get industry leading support for any question or problem you have.



PAY YOUR WAY

Now, with more ways to pay*, it's easier than ever to shop for parts online.

*Payment options may vary by dealer.

VISIT PARTS.CAT.COM

AND GET **15% OFF GREASE**
AND **20% OFF OIL PRODUCTS**
IN PACKAGE QUANTITY*

Use Promocode "GREASE15" or use Promocode "OIL20"
Offer cannot be combined with other rebates and discounts.
Conditions apply. Contact your local H.O. Penn Representative for details.
Offer is valid through June 30, 2024. *40 ct. per box



CERTIFIED REBUILDS



D6/D8 N/R/T REBUILD OPTIONS

Renewing your Cat® D6/D8 with the latest technology, performance, safety, and comfort options will make your machine better than brand new.

For a limited time, choose one of the rebuild packages below and get special pricing and upgrade options.

Plus, get a complementary **3 year/5,000 hour** Extended Protection Plan



| SERVICES PERFORMED | CUSTOM REBUILD | CERTIFIED POWERTRAIN | CERTIFIED POWERTRAIN + HYDRAULICS | CERTIFIED MACHINE |
|--|--------------------------|----------------------|-----------------------------------|---------------------|
| Perform Inspection & Clean Machine | <input type="checkbox"/> | ✓ | ✓ | ✓ |
| Recondition/Replace Engine | <input type="checkbox"/> | ✓ | ✓ | ✓ |
| Complete All Engine Updates | <input type="checkbox"/> | ✓ | ✓ | ✓ |
| Recondition Radiator & Aftercooler | <input type="checkbox"/> | ✓ | ✓ | ✓ |
| Recondition/Replace Hydraulic Fan Motor & Pump | <input type="checkbox"/> | ✓ | ✓ | ✓ |
| Replace Powertrain Electrical Components | <input type="checkbox"/> | ✓ | ✓ | ✓ |
| Replace Hoses & Lines For Engine, Powertrain/Drivetrain, Steering, Fan | <input type="checkbox"/> | ✓ | ✓ | ✓ |
| Recondition/Replace Emissions/Exhaust | <input type="checkbox"/> | ✓ | ✓ | ✓ |
| Recondition/Replace Transmission, Torque Converter & Oil Pump | <input type="checkbox"/> | ✓ | ✓ | ✓ |
| Recondition/Replace Final Drives & Brakes | <input type="checkbox"/> | ✓ | ✓ | ✓ |
| Recondition/Replace Differentials/Drive Shafts | <input type="checkbox"/> | ✓ | ✓ | ✓ |
| Recondition Brake Control Valve | <input type="checkbox"/> | ✓ | ✓ | ✓ |
| Recondition/Replace Brake Pump | <input type="checkbox"/> | ✓ | ✓ | ✓ |
| Complete All Required Powertrain Updates | <input type="checkbox"/> | ✓ | ✓ | ✓ |
| R&I Hydraulic Components | <input type="checkbox"/> | | ✓ | ✓ |
| Replace All Hydraulic Hoses & Lines | <input type="checkbox"/> | | ✓ | ✓ |
| Recondition Hydraulic Tank | <input type="checkbox"/> | | ✓ | ✓ |
| Recondition Hydraulic Control Valves | <input type="checkbox"/> | | ✓ | ✓ |
| Recondition/Replace Steering Motor & Pump | <input type="checkbox"/> | | ✓ | ✓ |
| Recondition/Replace Implement Pump | <input type="checkbox"/> | | ✓ | ✓ |
| Recondition Hydraulic Cylinders (Lift/Tilt/Angle/Ripper) | <input type="checkbox"/> | | ✓ | ✓ |
| Replace Hydraulic Electrical Components | <input type="checkbox"/> | | ✓ | ✓ |
| Complete All Required Hydraulic Updates | <input type="checkbox"/> | | ✓ | ✓ |
| Recondition Cab/HVAC System | <input type="checkbox"/> | | | ✓ |
| Undercarriage | <input type="checkbox"/> | | | ✓ |
| Paint Machine | <input type="checkbox"/> | | | ✓ |
| Replace Decals | <input type="checkbox"/> | | | ✓ |
| Install Product Link - (*Based On Machine) | <input type="checkbox"/> | 3 Years | 3 Years | 3 Years |
| Preventative Maintenance (CVA) | <input type="checkbox"/> | 1,000 HR Parts Only | 1,000 HR Plus Labor | 2,000 HR Plus Labor |
| Complete Performance Testing, Adjust Pressures & Update Software | <input type="checkbox"/> | ✓ | ✓ | ✓ |
| Field Follow-Up At Or After 50 Hours | <input type="checkbox"/> | ✓ | ✓ | ✓ |



SCAN TO VIEW
MORE REBUILD OPTIONS



Contact Your Product Support Sales Rep at 844-CAT-1923

SCAN TO VIEW
CUSTOMER TESTIMONIAL



Offer ends June 30, 2024.

HUGE ONLINE SAVINGS!

REGISTER FOR THE FIRST TIME ON PARTS.CAT.COM AND
RECEIVE 20% OFF ALL ORDERS THROUGH JUNE 30!!!
AND A FREE T-SHIRT!!!!



SCAN HERE



Use Promocode "THANKS20". Offer is valid for new online customers only. H.O. Penn reserves the right to refuse credit, services and charges at any time. Offer ends June 30, 2024. T-shirt design and color may vary.



UP TO
18% OFF

CMCR COMPONENT
AND RECEIVE EPP
3 YEARS/5,000 SMUs FREE



CERTIFIED MACHINE COMPONENT REBUILD

ASK US ABOUT A FREE 3 YEAR 5,000 HOUR
WARRANTY OR FREE ECM WHEN A CMCR-E
IS COMPLETED BY H.O. PENN DEALER
SERVICE SHOP

0% FOR 18 MONTHS

ANY CMCR THROUGH
CAT® FINANCING



H.O.PENN
Since 1923



844-CAT-1923 | hopenn.com

Offer ends June 30, 2024.

50% OFF

Receive **50% OFF** labor on a second cylinder reseal

NEED IT FASTER? **10% OFF** in stock reman or new cylinders and rods when you purchase a minimum 500 hour parts only PM kit

Offers valid through June 30, 2024. Program FOC-MLP-7289



877-871-5411 | hopenn.com

RUBBER BELT INVENTORY BLOWOUT SALE!
WHILE SUPPLIES LAST

RUBBER BELTS

**30% OFF GENERAL DUTY OR
15% OFF PREMIUM RUBBER TRACKS**

0%
**FINANCING
AVAILABLE**



FLAT RATE INSTALLATION
\$995 REMOVE AND INSTALL
(ON MTL/CTL IN-SHOP ONLY)

Program NAT-UC-54 – 30% off General Duty;
NAT-UC-3055 – 15% off Premium.
Offers valid through June 30, 2024.



CALL OR CLICK TODAY

844-CAT-1923

<https://www.hopenn.com/deals-specials/>

UP TO
15% OFF
FILTERS AND FLUIDS



Offers valid through June 30, 2024. NAT-GET-2/SV Focus Program

10% OFF
ALL "IN-STORE"
CAT GIFTS AND
APPAREL



Offer cannot be combined with other rebates and discounts. Conditions apply. Contact your local H.O. Penn Representative for details. Offers expire June 30, 2024.

15% OFF
ALL CAT PAINT
PURCHASED IN
CASE QUANTITY



- SAVE ON 12 OZ. AEROSOLS (SIX OR MORE)
- SAVE ON ONE GALLON CANS (CASE QTY)

Offer cannot be combined with other rebates and discounts. Conditions apply. Contact your local H.O. Penn Representative for details. Offers expire June 30, 2024.

25% OFF
ALL CATERPILLAR OIL FLUID
FILTERS PURCHASED IN
CASE QUANTITY



Offer cannot be combined with other rebates and discounts. Conditions apply. Contact your local H.O. Penn Representative for details. Offers expire June 30, 2024.

10% OFF
ALL CAT
SAFETY GLOVES
(276-0498) (All P/N Sizes)



Offer cannot be combined with other rebates and discounts. Conditions apply. Contact your local H.O. Penn Representative for details. Offers expire June 30, 2024.

10% OFF
ALL CAT SAFETY
GLASSES



Offer cannot be combined with other rebates and discounts. Conditions apply. Contact your local H.O. Penn Representative for details. Offers expire June 30, 2024.

10% OFF
PURCHASE OF ONE CASE OF
CAT ANTIFREEZE

6 per case (238-8648 or 339-3768)



Offer cannot be combined with other rebates and discounts. Conditions apply. Contact your local H.O. Penn Representative for details. Offers expire June 30, 2024.

10% OFF
COOLING SYSTEM
TESTER



Offer cannot be combined with other rebates and discounts. Conditions apply. Contact your local H.O. Penn Representative for details. Offers expire June 30, 2024.



844-CAT-1923 | hopenn.com

10% OFF PARTS OR 30% OFF WARRANTY
(UP TO \$8,000)
MAJOR OVERHAUL EXTENDED
SERVICE COVERAGE
(PLATINUM AND PLATINUM PLUS)



Offer expires June 30, 2024. Applies to C32 and smaller engines. Excludes oil and gas engine models. Excludes overhaul foundational kits. Cannot be combined with other programs except for product support financing. NAT-MLP-5393/NAT-MLP-431

POWER SYSTEMS PRODUCT SUPPORT

365 DAYS A YEAR
WE'VE GOT YOU COVERED.

WHY CHOOSE H.O. PENN MACHINERY AS YOUR CAT DEALER?

- » Ready 24/7/365
- » Strategically Located Near You
- » Largest Mobile Service Fleet in the NE
- » Factory-trained and Certified Technicians
- » Planned Maintenance Service Agreements Available

WE RENT CAT® GENERATORS



Scan the QR code to browse our fleet and request a quote.



844-CAT-1923 | hopenn.com



PPSRT STD
US POSTAGE
PAID
PARSONS, KS
PERMIT 181



H.O. Penn Machinery
122 Noxon Road
Poughkeepsie, NY 12603-9922

LOOK INSIDE FOR PARTS & SERVICE SPECIALS



844-CAT-1923 BRANCH LOCATIONS

Bloomingburg, NY
783 Bloomingburg Road

Bronx, NY
699 Brush Avenue

Holtsville, NY
660 Union Avenue

Medford, NY
20 Platinum Court (Power Division)

Newington, CT
225 Richard Street

Poughkeepsie, NY
122 Noxon Road

**Serving our
customers for
4 generations**



844-CAT-1923 | hopenn.com

© 2024 Caterpillar. All Rights Reserved. CAT, CATERPILLAR, LET'S DO THE WORK, their respective logos, "Caterpillar Corporate Yellow", the "Power Edge" and Cat "Modern Hex" trade dress as well as corporate and product identity used herein, are trademarks of Caterpillar and may not be used without permission. www.cat.com / www.caterpillar.com