

AGRICULTURE ATTACHMENTS

TACKLE MORE TASKS WHILE MITIGATING COSTS WITH YOUR CAT® MACHINE.

Cat Skid Steer Loaders, Multi Terrain Loaders, Compact Track Loaders, Compact Wheel Loaders, Backhoe Loaders, Small Wheel Loaders, Mini Excavators and Telehandlers

For more information, visit
Cat.com/attachments or
contact your local Cat dealer.



BUILT FOR IT.™

AEXQ1600-03 October 2016

© 2016 Caterpillar. All Rights Reserved. CAT, CATERPILLAR, BUILT FOR IT, their respective logos, "Caterpillar Yellow," the "Power Edge" trade dress, as well as corporate and product identity used herein, are trademarks of Caterpillar and may not be used without permission.

BUILT FOR IT.™

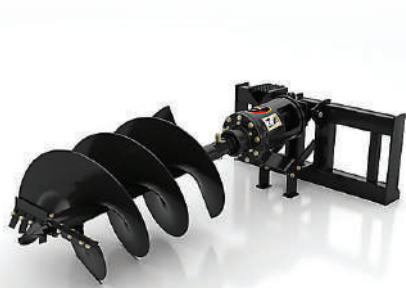


MOVE MATERIAL, SPREAD FEED AND KEEP OPERATIONS ON SCHEDULE.

We offer more than a dozen agriculture attachments, all made to keep your operation on task and on schedule. Cat attachments can renew the life of your existing fleet. And they're designed to maximize Cat machine performance so you get more use at a lower cost.



AUGERS



Bore with better efficiency.

Our augers offer different speed and torque options for work in a variety of soils. We've engineered their speed to extract soil efficiently and their torque to prevent stalling in dense ground. Select from a range of auger bits.

Specifications

| Attachment Models | Compatibility | Drive Shaft Torque @ Max Pressure | | Drive Method |
|-------------------|--------------------|-----------------------------------|---------|------------------|
| | | Nm | (lb ft) | |
| A14B | CTL, MTL, SSL, CWL | 2304 | (1700) | Direct Drive |
| A19B | CTL, MTL, SSL, CWL | 4122 | (3042) | Single Planetary |
| A26B | CTL, MTL, SSL, CWL | 6830 | (5040) | Double Planetary |
| A7B | MHEX | 1105 | (815) | Direct Drive |
| A14B | MHEX | 2304 | (1700) | Direct Drive |
| A19B | MHEX | 4122 | (3042) | Single Planetary |
| A26B | MHEX | 6830 | (5040) | Double Planetary |
| A 26B Pin-on | BHL | 6830 | (5040) | Double Planetary |

BHL: Backhoe Loader MHEX: Mini Excavator
 CTL: Compact Track Loader MTL: Multi Terrain Loader
 CWL: Compact Wheel Loader SSL: Skid Steer Loader

Certain models within the family of machines listed may not be compatible with the attachment. Please consult your Cat dealer for further information.

BALE GRABS



Grab baled material with greater precision.

Use our bale grabs for grasping, carrying and placing large baled materials. Their tubular arms eliminate damage to the wrapping or bale itself, while the rigid, high-strength steel frame extends working life. This attachment also comes with hardened pins and easily accessible grease points for greater productivity and a bolt-on step for safer cab access.

Specifications

| Attachment Models | Compatibility | Weight | | Maximum opening width | | Internal width w/ closed arms | |
|-------------------|--------------------|--------|------|-----------------------|------|-------------------------------|------|
| | | kg | (lb) | mm | (in) | mm | (in) |
| 1803 mm (71 in) | CTL, CWL, MTL, SSL | 261 | 575 | 1803 | 71 | 940 | 37 |
| 2133 mm (84 in) | CTL, CWL, MTL, SSL | 263 | 580 | 2133 | 84 | 918 | 36 |

CTL: Compact Track Loader MTL: Multi Terrain Loader
 CWL: Compact Wheel Loader SSL: Skid Steer Loader

Certain models within the family of machines listed may not be compatible with the attachment. Please consult your Cat dealer for further information.

BALE SPEARS



Make moving bales simple.

Select from our single or dual spear design, both ideal for removing or placing bales in a stack. Our single-spear models include stabilizers and dual-spear models feature a high backrest for large loads. Spears are easily replaced and frames offer a bolt-on step.

Specifications

| Attachment Models | Compatibility | Overall Width | | Weight | |
|-----------------------------|---------------|---------------|------|--------|-------|
| | | mm | (in) | kg | (lb) |
| 990 mm (39 in) Single Tine | CTL, MTL, SSL | 1285 | (51) | 70 | (154) |
| 1245 mm (49 in) Single Tine | CTL, MTL, SSL | 1285 | (51) | 72 | (158) |
| 990 mm (39 in) Dual Tine | CTL, MTL, SSL | 1407 | (55) | 118 | (260) |
| 1245 mm (49 in) Dual Tine | CTL, MTL, SSL | 1407 | (55) | 121 | (266) |

CTL: Compact Track Loader
 MTL: Multi Terrain Loader
 SSL: Skid Steer Loader

Certain models within the family of machines listed may not be compatible with the attachment. Please consult your Cat dealer for further information.

BRUSHCUTTERS



Clear overgrowth effectively.

Reduce vegetation, brush and trees with an 80 mm (3 in) diameter or less into a coarse byproduct. Select from a range of lengths and widths.

Specifications

| Attachment Models | Compatibility | Working Width | | Tip Speed | | Unit Weight | |
|-------------------|---------------|---------------|------|-----------|---------------|-------------|--------|
| | | mm | (in) | m/min | (fpm) | kg | (lb) |
| BR160 | CTL, MTL, SSL | 1524 | (60) | 3987-5596 | (13080-18360) | 431 | (950) |
| BR166 | CTL, MTL, SSL | 1676 | (66) | 3130-4395 | (10270-14420) | 476 | (1050) |
| BR172 | CTL, MTL, SSL | 1829 | (72) | 3417-4795 | (11210-15730) | 499 | (1100) |
| BR272 | CTL, MTL, SSL | 1829 | (72) | 4554-5992 | (14940-19660) | 508 | (1120) |
| BR378 | CTL, MTL, SSL | 1981 | (78) | 4176-6032 | (13700-19790) | 535 | (1180) |

CTL: Compact Track Loader
 MTL: Multi Terrain Loader
 SSL: Skid Steer Loader

Certain models within the family of machines listed may not be compatible with the attachment. Please consult your Cat dealer for further information.

COUPLERS



Move quickly from task to task.

Our Dual Lock™ Pin Grabber Couplers allow operators to change attachments in seconds, increasing job efficiency and enabling one machine to do multiple tasks. We offer two, easy-to-use options: hydraulic (controlled from the cab) and mechanical. And all Cat models include primary and secondary locking systems to ensure what you put on your machine, stays on.

Specifications

| Attachment Models | Compatibility | Weight | |
|---------------------|---------------|---------|-----------|
| | | kg | (lb) |
| Dual Lock™ | BHL, MHEX | 14-89 | (32-195) |
| Dual Lock™ Tilt | MHEX | 112-198 | (245-436) |
| Fusion™ | SWL | 252-392 | (556-865) |
| Horizontal Pin Lock | CWL | 181 | (400) |
| IT - Loader | BHL | 117-227 | (390-500) |
| Pin Lock - Hoe | BHL | 80-109 | (176-240) |
| Pin Puller | BHL | 95-118 | (210-260) |

BHL: Backhoe Loader SWL: Small Wheel Loader
 CWL: Compact Wheel Loader
 MHEX: Mini Excavator

Certain models within the family of machines listed may not be compatible with the attachment. Please consult your Cat dealer for further information.

HEAVY DUTY BUCKETS

Move harsh soils with minimal wear.

Dig, trench or backfill with our heavy duty buckets. They're made to excavate in abrasive soils and move large loads. Select from a range of bucket sizes and teeth.



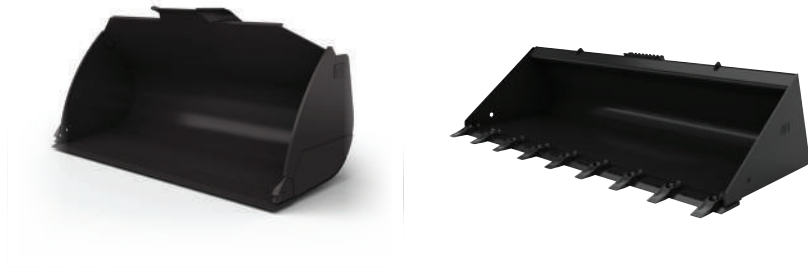
Specifications

| Attachment Models | Compatibility | Width Range | | Capacity Range | |
|------------------------|---------------|-------------|---------|----------------|---------------|
| | | mm | (in) | m³ | (yd³) |
| Digging | MHEX | 230-270 | (9-28) | 0.014-0.111 | (0.018-0.145) |
| Ditch Cleaning | MHEX | 700-1600 | (28-63) | 0.027-0.421 | (0.035-0.55) |
| Tilting Ditch Cleaning | MHEX | 1000-1600 | (40-63) | 0.055-0.28 | (0.071-0.366) |
| Heavy Duty | MHEX | 300-914 | (12-36) | 0.05-0.39 | (0.065-0.51) |
| Heavy Duty Capacity | MHEX | 300-915 | (12-36) | 0.082-0.300 | (0.107-0.392) |
| Heavy Duty Rock | MHEX | 610-762 | (24-30) | 0.23-0.31 | (0.30-0.405) |
| Grading | MHEX | 1000-1500 | (39-59) | 0.09-0.52 | (0.12-0.68) |
| Coral | BHL | 305-762 | (12-30) | 0.06-0.19 | (0.08-0.25) |
| Ditch Cleaning | BHL | 1219-1524 | (48-60) | 0.37-0.57 | (0.48-0.74) |
| Heavy Duty | BHL | 305-914 | (12-36) | 0.08-0.44 | (0.1-0.57) |
| Heavy Duty Rock | BHL | 305-914 | (12-36) | 0.07-0.33 | (0.09-0.43) |
| Grading | BHL | 1200-1500 | (47-60) | 0.41-0.52 | (0.54-0.68) |
| Soil Excavation | BHL | 457-914 | (18-36) | 0.18-0.38 | (0.23-0.5) |
| Standard Duty | BHL | 305-914 | (12-36) | 0.08-0.29 | (0.1-0.38) |
| High Capacity | BHL | 305-914 | (12-36) | 0.13-0.46 | (0.17-0.60) |

BHL: Backhoe Loader MHEX: Mini Excavator

Certain models within the family of machines listed may not be compatible with the attachment. Please consult your Cat dealer for further information.

GENERAL PURPOSE BUCKETS



Work with mildly abrasive materials.

Our general purpose buckets are ideal for digging in low-impact, moderately abrasive materials such as dirt, loam, gravel and clay. Select from a range of bucket sizes and teeth.

Specifications

| Attachment Models | Compatibility | Width Range | | Capacity Range | |
|------------------------------------|---------------|-------------|-----------|----------------|--------------------|
| | | mm | (in) | m ³ | (yd ³) |
| General Purpose | BHL | 2262-2434 | (89-96) | 0.76-1.5 | (1.0-2.0) |
| General Purpose | CTL, MTL, SSL | 1524-2134 | (60-84) | 0.36-0.63 | (0.47-0.82) |
| General Purpose | CWL | 1880-2413 | (74-95) | 0.76-1.38 | (1.0-1.80) |
| General Purpose | TH | 1854-2445 | (73-96) | 0.76-1.0 | (1.0-1.3) |
| General Purpose Performance Series | SWL | 2550-2750 | (100-108) | 1.9-2.9 | (2.5-3.8) |

BHL: Backhoe Loader MTL: Multi Terrain Loader TH: Telehandler
 CTL: Compact Track Loader SSL: Skid Steer Loader
 CWL: Compact Wheel Loader SWL: Small Wheel Loader

Certain models within the family of machines listed may not be compatible with the attachment. Please consult your Cat dealer for further information.

LIGHT MATERIAL BUCKETS



Move more in a single scoop.

Our light material buckets are designed to move high volumes of low-density material such as bedding, dry topsoil, fertilizer, feed and snow.

Specifications

| Attachment Models | Compatibility | Width Range | | Capacity Range | |
|-------------------|---------------|-------------|-----------|----------------|--------------------|
| | | mm | (in) | m ³ | (yd ³) |
| Light Material | CTL, MTL, SSL | 1829-2438 | (72-96) | 0.69-0.93 | (0.9-1.22) |
| Light Material | CWL | 1870-2050 | (74-81) | 0.76-1.53 | (1.0-2.0) |
| Light Material | SWL | 2750 | (108) | 3.10-5.00 | (4.00-6.50) |
| Light Material | TH | 2550-2750 | (100-108) | 1.9-2.9 | (2.5-3.8) |

CTL: Compact Track Loader SSL: Skid Steer Loader
 CWL: Compact Wheel Loader SWL: Small Wheel Loader
 MTL: Multi Terrain Loader TH: Telehandler

Certain models within the family of machines listed may not be compatible with the attachment. Please consult your Cat dealer for further information.

MATERIAL HANDLING BUCKETS



Load and unload with ease.

With a large capacity and optimal shape for loading, our material handling buckets are ideal for stockpiling, carrying, dumping and backfilling.

Specifications

| Attachment Models | Compatibility | Width Range | | Capacity Range | |
|-------------------|--------------------|-------------|----------|----------------|--------------------|
| | | mm | (in) | m ³ | (yd ³) |
| Material Handling | CTL, CWL, MTL, SSL | 2134-2591 | (84-102) | 1.07-1.33 | (1.40-1.74) |
| Material Handling | TH | 2418 | (95) | 1.5 | (1.95) |

CTL: Compact Track Loader SSL: Skid Steer Loader
 CWL: Compact Wheel Loader TH: Telehandler
 MTL: Multi Terrain Loader

Certain models within the family of machines listed may not be compatible with the attachment. Please consult your Cat dealer for further information.

MULTI-PURPOSE BUCKETS



Use one bucket to do the job of many.

Our multi-purpose buckets are one of our most versatile buckets. With a clam design, bolt-on cutting edge and spill guard, they easily doze, grade, level and unload material.

Specifications

| Attachment Models | Compatibility | Width Range | | Capacity Range | |
|-------------------|---------------|-------------|---------|----------------|--------------------|
| | | mm | (in) | m ³ | (yd ³) |
| Multi-Purpose | BHL | 2262-2425 | (89-95) | 1.0-1.2 | (1.3-1.5) |
| Multi-Purpose | CTL, MTL, SSL | 1524-2134 | (60-84) | 0.3-0.43 | (0.39-0.56) |
| Multi-Purpose | CWL | 1880-2413 | (74-95) | 0.76-1.6 | (1.0-2.1) |
| Multi-Purpose | TH | 1829-2418 | (72-95) | 0.37-1.0 | (0.48-1.3) |

BHL: Backhoe Loader MTL: Multi Terrain Loader
 CTL: Compact Track Loader SSL: Skid Steer Loader
 CWL: Compact Wheel Loader TH: Telehandler

Certain models within the family of machines listed may not be compatible with the attachment. Please consult your Cat dealer for further information.

MATERIAL HANDLING ARMS



Carry and place with precision.

Safely transport non-uniform materials, as well as carry and plant trees or shrubs. Cat material handling arms offer two lift points, each set up to hold a locking hook capable of swiveling 360 degrees.

Specifications

| Attachment Models | Compatibility | Retracted Length | | Extended Length | |
|-------------------|------------------------|--------------------|-------|-----------------|-------|
| | | mm | (in) | mm | (in) |
| Extendible | BHL, CWL, TH | 2007 | (79) | 3937 | (155) |
| Extendible | SWL | 2760 | (109) | 4137 | (163) |
| | | Width w/ Side Step | | Maximum Reach | |
| Fixed Length | CTL, CWL, MTL, SSL, TH | 1309 | (52) | 2134 | (84) |

| | | |
|---------------------------|---------------------------|-----------------|
| BHL: Backhoe Loader | MTL: Multi Terrain Loader | TH: Telehandler |
| CTL: Compact Track Loader | SSL: Skid Steer Loader | |
| CWL: Compact Wheel Loader | SWL: Small Wheel Loader | |

Certain models within the family of machines listed may not be compatible with the attachment. Please consult your Cat dealer for further information.

PALLET FORKS



Properly transport palletized materials.

From standard hay bales to stacked feedbags, our pallet forks were designed for stable transportation. Our frame features a tall backboard to secure the load for improved safety and efficiency.

Specifications

| Compatibility | Tine Length | | Fork Tine Width | |
|---------------|-------------|---------|-----------------|---------|
| | mm | (in) | mm | (in) |
| BHL | 1067-1372 | (42-54) | 127 | (5.0) |
| CTL, MTL, SSL | 910-1220 | (36-48) | 100 | (4) |
| TH | 1219-1524 | (48-60) | 100-152 | (4-6) |
| | Tine Length | | Carriage Width | |
| CWL | 1050-1829 | (41-72) | 1397-1550 | (55-61) |
| SWL | 1220-1524 | (48-60) | 1524 | (60) |

| | | |
|---------------------------|---------------------------|-----------------|
| BHL: Backhoe Loader | MTL: Multi Terrain Loader | TH: Telehandler |
| CTL: Compact Track Loader | SSL: Skid Steer Loader | |
| CWL: Compact Wheel Loader | SWL: Small Wheel Loader | |

Certain models within the family of machines listed may not be compatible with the attachment. Please consult your Cat dealer for further information.

RIPPERS



Tear up more terrain.

Built to cut through dense dirt, loosen rocky soil and break below the frost layer, Cat rippers are taking on some of the most challenging ground conditions. And because they're made for specific Cat models, they can better transfer machine power into ripping power.

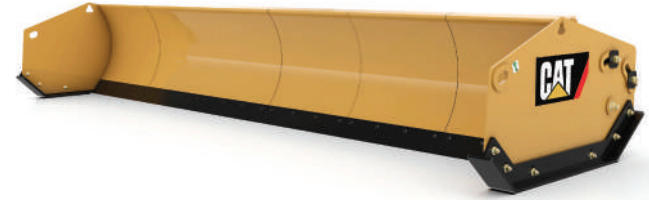
Specifications

| Attachment Models (Shank Length) | | Compatibility | Width | | Width | | Tip Radius | | Weight | |
|----------------------------------|------|---------------|-------|--------|-------|--------|------------|------|--------|-------|
| mm | (in) | | mm | (in) | mm | (in) | mm | (in) | kg | (lb) |
| 490 | (19) | MHEX | 232 | (9.1) | 660 | (25.9) | 650 | (26) | 45 | (99) |
| 676 | (27) | MHEX | 273 | (10.7) | 825 | (32.4) | 810 | (32) | 61 | (134) |
| 861 | (34) | MHEX | 346 | (13.6) | 1074 | (42.2) | 1039 | (41) | 107 | (235) |

MHEX: Mini Excavator

Certain models within the family of machines listed may not be compatible with the attachment. Please consult your Cat dealer for further information.

SECTIONAL SNOW PUSHES



Remove snow from uneven surfaces – in a single pass.

Our sectional snow pushes save time and reduce the amount of salt needed. They're ideal for parking lots, driveways, airport runways and storage lots. Select from a range of widths.

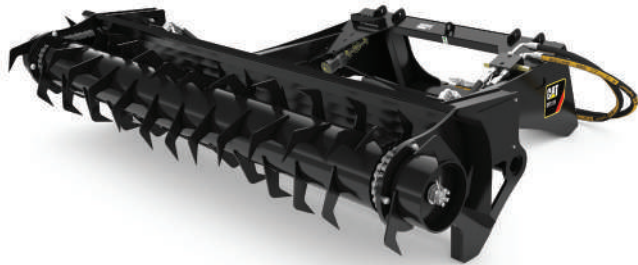
Specifications

| Attachment Models | Compatibility | Moldboard Sections | Weight | | Coupler Interface |
|-------------------------------|--------------------|--------------------|--------|--------|-------------------|
| | | | kg | (lb) | |
| 2.4 m (8 ft) Standard Duty | CTL, MTL, SSL | 3 | 635 | (1400) | SSL |
| 3 m (10 ft) Standard Duty | CTL, MTL, SSL | 4 | 771 | (1700) | SSL |
| 3.6 m (12 ft) Standard Duty | CTL, CWL, MTL, SSL | 5 | 907 | (2000) | SSL |
| 3.6 m (12 ft) Industrial Duty | SWL | 4 | 1548 | (3413) | Fusion™ |
| 4.2 m (14 ft) Industrial Duty | SWL | 5 | 1729 | (3813) | Fusion™ |
| 4.8 m (16 ft) Industrial Duty | SWL | 6 | 1911 | (4213) | Fusion™ |

CTL: Compact Track Loader SSL: Skid Steer Loader
 CWL: Compact Wheel Loader SWL: Small Wheel Loader
 MTL: Multi Terrain Loader

Certain models within the family of machines listed may not be compatible with the attachment. Please consult your Cat dealer for further information.

SILAGE DEFACERS



Powering through the bunkers.

Featuring high tensile strength teeth positioned in a helical pattern, our silage defacers free and work loose compacted silage bunkers without damaging or cutting the material. They're also equipped with dual in-board hydraulic motors for stall-free operation and peak torque to power through the densest of silage bunks.

Specifications

| Attachment Models | Compatibility | Overall Width | | Weight | | Flow Range | |
|-------------------|--------------------|---------------|------|--------|------|------------|-------|
| | | mm | (in) | kg | (lb) | L/min | (GPM) |
| DFS118 | CTL, CWL, MTL, SSL | 1841 | 72.5 | 425 | 937 | 75-90 | 20-23 |
| DFS121 | CTL, CWL, MTL, SSL | 5146 | 84.5 | 477 | 1052 | 75-90 | 20-23 |
| DFS124 | CTL, CWL, MTL, SSL | 2451 | 96.5 | 503 | 1109 | 75-90 | 20-23 |

CTL: Compact Track Loader
CWL: Compact Wheel Loader

MTL: Multi Terrain Loader
SSL: Skid Steer Loader

Certain models within the family of machines listed may not be compatible with the attachment. Please consult your Cat dealer for further information.

STRAIGHT SNOW PUSHES



Remove snow in a single pass.

Our straight snow pushes save time and reduce the amount of salt needed. They're ideal for parking lots, driveways, airport runways and storage lots. Select from a range of widths.

Specifications

| Attachment Models | Compatibility | Weight | | Coupler Interface |
|--------------------------------|--------------------|--------|--------|-------------------|
| | | kg | (lb) | |
| 2.4 m (8 ft) Push Rubber Edge | CTL, CWL, MTL, SSL | 176 | (389) | SSL |
| 3 m (10 ft) Push Rubber Edge | CTL, CWL, MTL, SSL | 197 | (434) | SSL |
| 3.6 m (12 ft) Push Rubber Edge | CTL, CWL, MTL, SSL | 216 | (477) | SSL |
| 2.4 m (8 ft) Push Steel Edge | CTL, CWL, MTL, SSL | 176 | (389) | SSL |
| 3 m (10 ft) Push Steel Edge | CTL, CWL, MTL, SSL | 197 | (434) | SSL |
| 3.6 m (12 ft) Push Steel Edge | CTL, CWL, MTL, SSL | 216 | (477) | SSL |
| 3 m (10 ft) Push | BHL, CWL, SWL | 371 | (818) | IT |
| 3.6 m (12 ft) Push | BHL, CWL, SWL | 428 | (943) | IT |
| 3.6 m (12 ft) Push | SWL | 598 | (1318) | Fusion™ |
| 4.2 m (14 ft) Push | SWL | 653 | (1439) | Fusion™ |
| 4.8 m (16 ft) Push | SWL | 701 | (1546) | Fusion™ |

BHL: Backhoe Loader
CTL: Compact Track Loader
CWL: Compact Wheel Loader

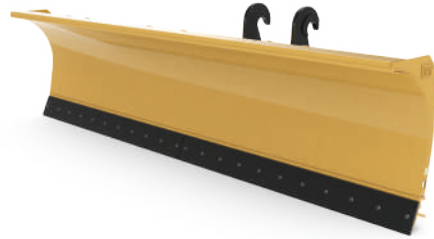
MTL: Multi Terrain Loader
SSL: Skid Steer Loader
SWL: Small Wheel Loader

Certain models within the family of machines listed may not be compatible with the attachment. Please consult your Cat dealer for further information.

SNOW PLOWS

Scrape snow and ice from ground surfaces.

Windrow snow to either side of the machine or directly ahead. Our snow plows are equipped with a trip edge to clear unseen obstacles. Select from a range of widths.



Specifications

| Attachment Models | Compatibility | Weight | | Coupler Interface |
|--------------------|--------------------|--------|--------|-------------------|
| | | kg | (lb) | |
| 1.8 m (6 ft) Plow | CTL, CWL, MTL, SSL | 155 | (341) | SSL |
| 2.1 m (7 ft) Plow | CTL, CWL, MTL, SSL | 185 | (409) | SSL |
| 2.4 m (8 ft) Plow | CTL, CWL, MTL, SSL | 196 | (432) | SSL |
| 2.7 m (9 ft) Plow | CTL, CWL, MTL, SSL | 206 | (455) | SSL |
| 3 m (10 ft) Plow | CTL, CWL, MTL, SSL | 216 | (477) | SSL |
| 2.7 m (9 ft) Plow | CWL | 340 | (750) | IT |
| 3 m (10 ft) Plow | CWL | 397 | (875) | IT |
| 3.6 m (12 ft) Plow | CWL | 423 | (932) | IT |
| 2.7 m (9 ft) Plow | BHL | 340 | (750) | IT |
| 3 m (10 ft) Plow | BHL | 397 | (875) | IT |
| 3.6 m (12 ft) Plow | BHL | 423 | (932) | IT |
| 3 m (10 ft) Plow | SWL | 439 | (968) | Fusion™ |
| 3.6 m (12 ft) Plow | SWL | 496 | (1093) | Fusion™ |
| 4.2 m (14 ft) Plow | SWL | 561 | (1236) | Fusion™ |

BHL: Backhoe Loader MTL: Multi Terrain Loader
 CTL: Compact Track Loader SSL: Skid Steer Loader
 CWL: Compact Wheel Loader SWL: Small Wheel Loader

Certain models within the family of machines listed may not be compatible with the attachment. Please consult your Cat dealer for further information.

THUMBS



Go from digging to material handling.

Our thumbs work with buckets and rippers to grab, pick, or sort material. They're offered with stiff link or are hydraulically controlled from the cab, opening and closing around loads. And when you don't need it, the thumb can recline against the machine stick.

Specifications

| Attachment Models | Compatibility | Rotation Angle |
|----------------------------|---------------|----------------|
| | | degrees |
| Hydraulic | BHL | 105 |
| Hydraulic | MHEX | 116-133 |
| Stiff Link | BHL | 90 |
| Stiff Link | MHEX | 81 |
| Hydraulic Progressive Link | MHEX | 174-181 |

BHL: Backhoe Loader
 MHEX: Mini Excavator

Certain models within the family of machines listed may not be compatible with the attachment. Please consult your Cat dealer for further information.

UTILITY GRAPPLE FORKS



Transport light material — in less time.

With a series of straight tines, our utility grapple fork can pierce bundles of straw, hay and dried waste. The curved upper jaw holds material on the tines to help retain the mass.

Specifications

| Compatibility | Fork Width | | Fork Tine Length | |
|---------------|------------|---------|------------------|------|
| | mm | (in) | mm | (in) |
| CTL, MTL, SSL | 1676-1829 | (66-72) | 940 | (37) |

CTL: Compact Track Loader
 MTL: Multi Terrain Loader
 SSL: Skid Steer Loader

Certain models within the family of machines listed may not be compatible with the attachment. Please consult your Cat dealer for further information.

WORK WITHOUT WORRY.

We back our attachments with a one-year warranty and ongoing Cat dealer support. It's another way we're helping protect what you rely on.



COMPATIBILITY



Backhoe Loaders



Compact Wheel Loaders



Mini Excavators



Skid Steer Loaders,
Compact Track Loaders,
Multi Terrain Loaders



Small Wheel Loaders



Telehandlers



