

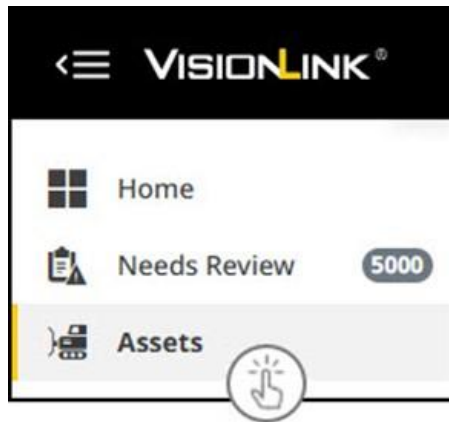
# MANAGE COMPONENTS



# MANAGE COMPONENTS

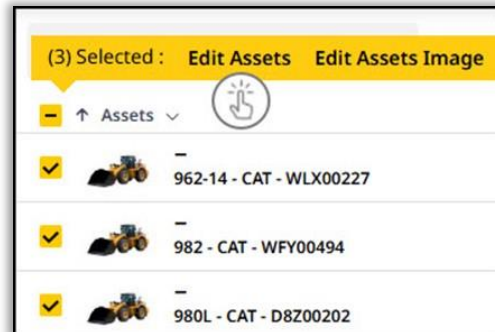
1

To add components to multiple assets, start by navigating to the **Assets** page.



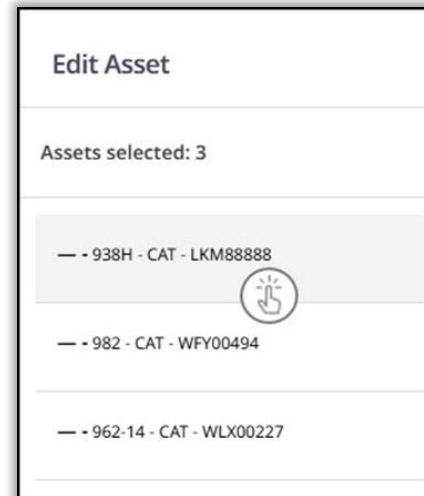
2

Find and select the check boxes for your assets. Then select **Edit Assets** from the bulk menu.



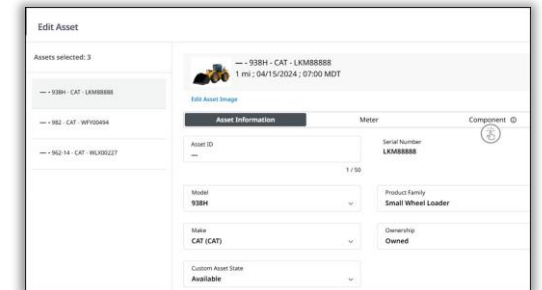
3

In the **Edit Asset** panel, select the first asset you wish to edit.



4

Next, select the **Component** tab from the **Edit Asset** panel.



# MANAGE COMPONENTS (CONT.)

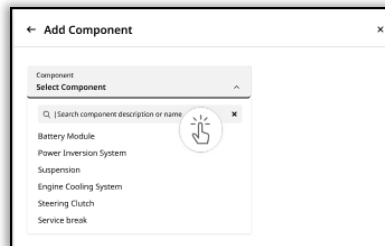
5

Select **Add Component**.

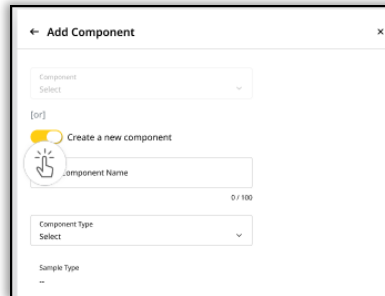


6

If this is a Make other than Cat, you select a component or create a new component.

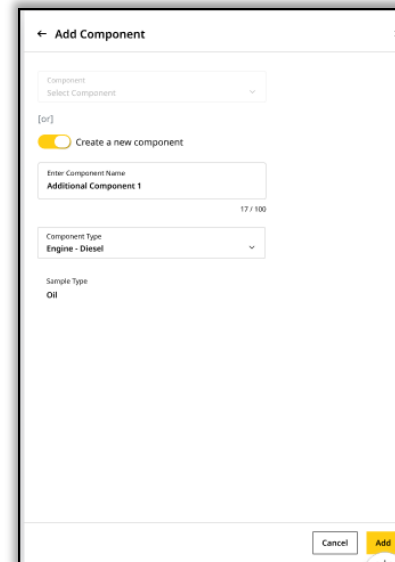


OR



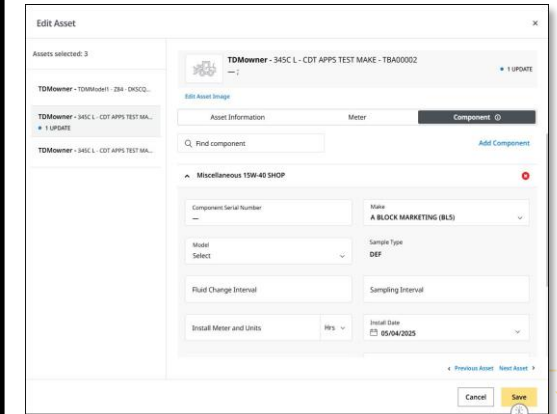
7

Complete the fields and select **Add**.



8

Select **Save** after making changes to all assets.

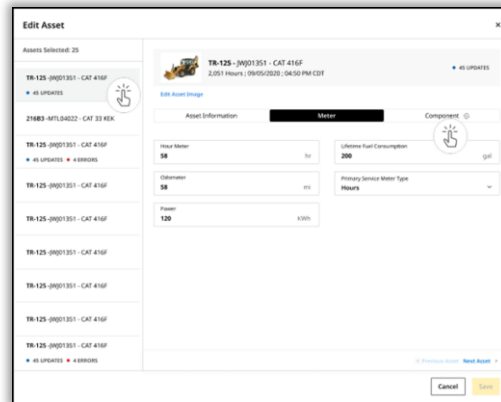


# MANAGE COMPONENTS (CONT.)

See below to learn how to remove (delete) a component. **Note:** You cannot remove default components – you can only remove components that you or another user has added.

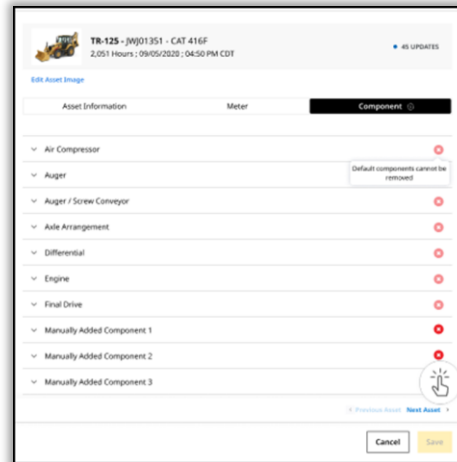
9

In the **Edit Asset** panel, select the asset and select the **Component** tab.



10

Select the red circle for the component you want to remove.



11

Select **Yes** to confirm the component you want to remove.

