

REGISTER FLUID SAMPLES ON A MOBILE DEVICE



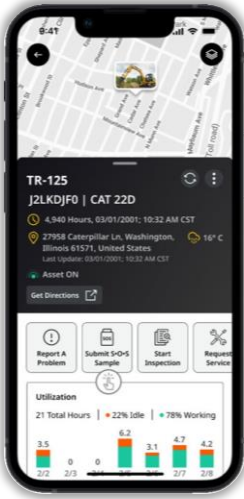
FLUID ANALYSIS POWERED BY S•O•SSM SERVICES TRAINING WORKBOOK

REGISTER FLUID SAMPLES ON A MOBILE DEVICE

Registering fluid samples using the VisionLink[®] mobile app makes it easy for you to set up and reuse frequently sampled component sets for assets, associate your assets' components with dealer-provided sample bottle numbers, and track your samples as they progress through the lab. This process can save time and reduce the risk of submitting unidentifiable samples.

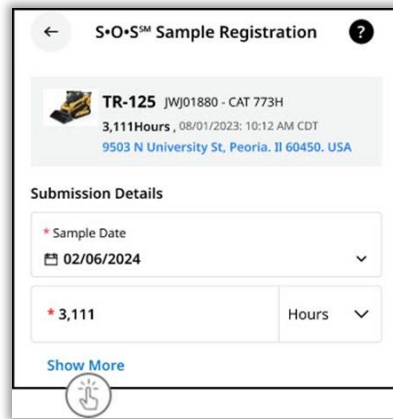
1

Search for the asset on your mobile device and select **Submit S•O•SSM Sample**.



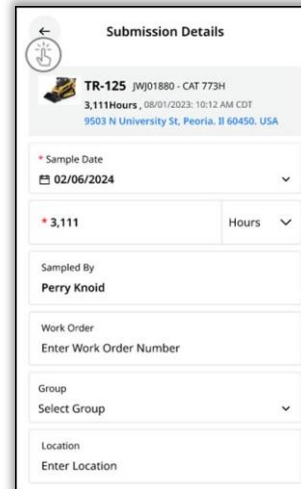
2

In the S•O•SSM Sample Registration > Submission Details section, today's date is the Sample Date by default. If the asset is connected and subscribed, it displays the latest Service Meter value and Primary Service Meter Type. Select Show More to add additional details.



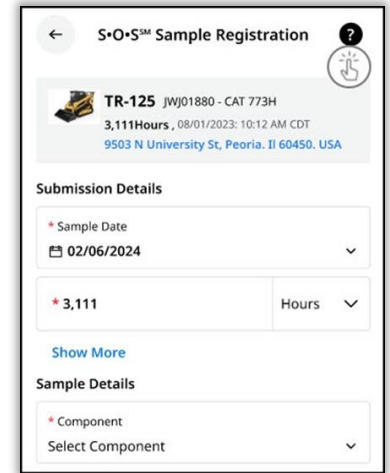
3

Select the back arrow to return to the S•O•SSM Sample Registration page.



4

Select the black question mark icon to view a tutorial that showcases specific steps for registering samples on your mobile device.



REGISTER FLUID SAMPLES ON A MOBILE DEVICE (CONT.)

5

In the **Sample Details** section, select the **Component** from the drop-down menu. If the asset is a Cat Make, you can search for the component by description or name in the **Select Component** pop-up. For assets other than Cat Make, you can select a component or add components manually.

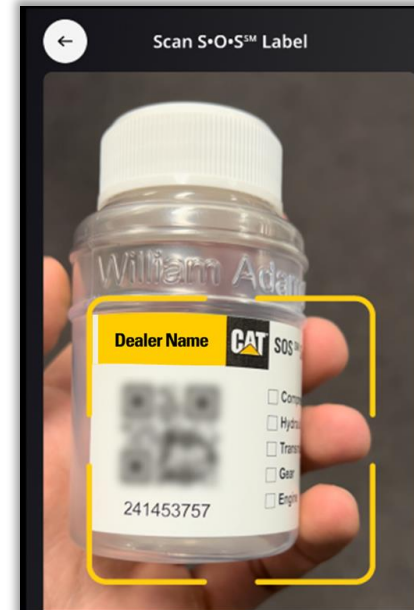
6

Enter the **Sample Number**. If you have a sample bottle provided by your dealer, then select the QR Scan icon.

7

Scan the QR code on the SOS fluid sample bottle.

Disclaimer: Photo does not reflect an actual dealer's bottle.



8

After the QR code is scanned, you are directed to the **Sample Details** page with the auto-populated **Sample Number**. Select **Show More** to add additional information.

REGISTER FLUID SAMPLES ON A MOBILE DEVICE (CONT.)

9

The **Fluid Type** and **Fluid Grade** fields become available when you select from the **Fluid Brand** drop-down menu.

Providing additional data results in better interpretation.

Fluid Change
Select Fluid Change

Filter Change
Select Filter Change

Fluid Brand
Select Fluid Brand

Fluid Type

Search

Fluid Name

Fluid Name

Fluid Name

10

If you change the priority to **Urgent**, you must enter notes explaining the urgency.

Priority
High

* Notes
Enter Notes

11

If you want to add additional samples from the same asset, select **Add Sample**. Once you are ready to submit, select **Submit**.

+ Add Sample

Cancel Submit

12

In the confirmation window, you can select **Submit Another Sample** to register a new sample or select **Close**.

Success! Sample Submitted

Submit Another Sample

Close